

DC POWER SOURCE

1. o/p voltage varied between (0-28)v MA
2. Maximum current output 1A
3. Production cost will be under 500 (varied by components)

Schematics using proteus

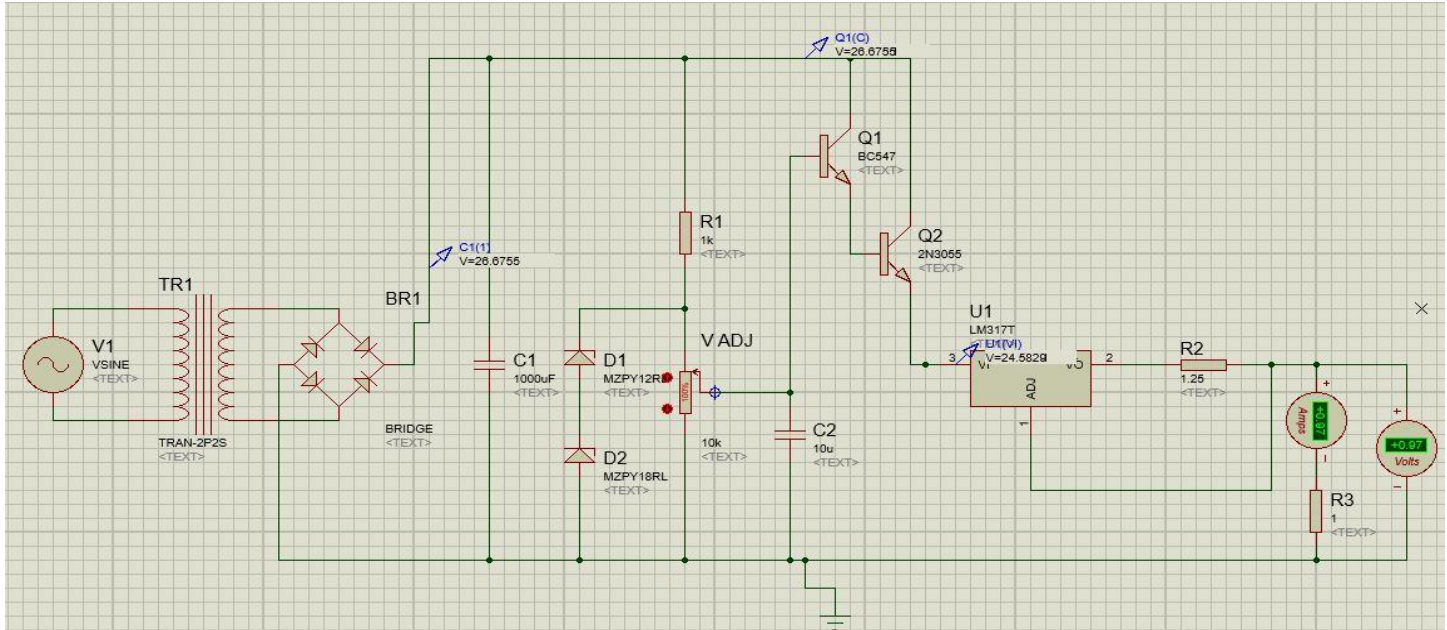


FIG: Maximum current output 1A(can't vary current. Fully depend on voltage adjustment)

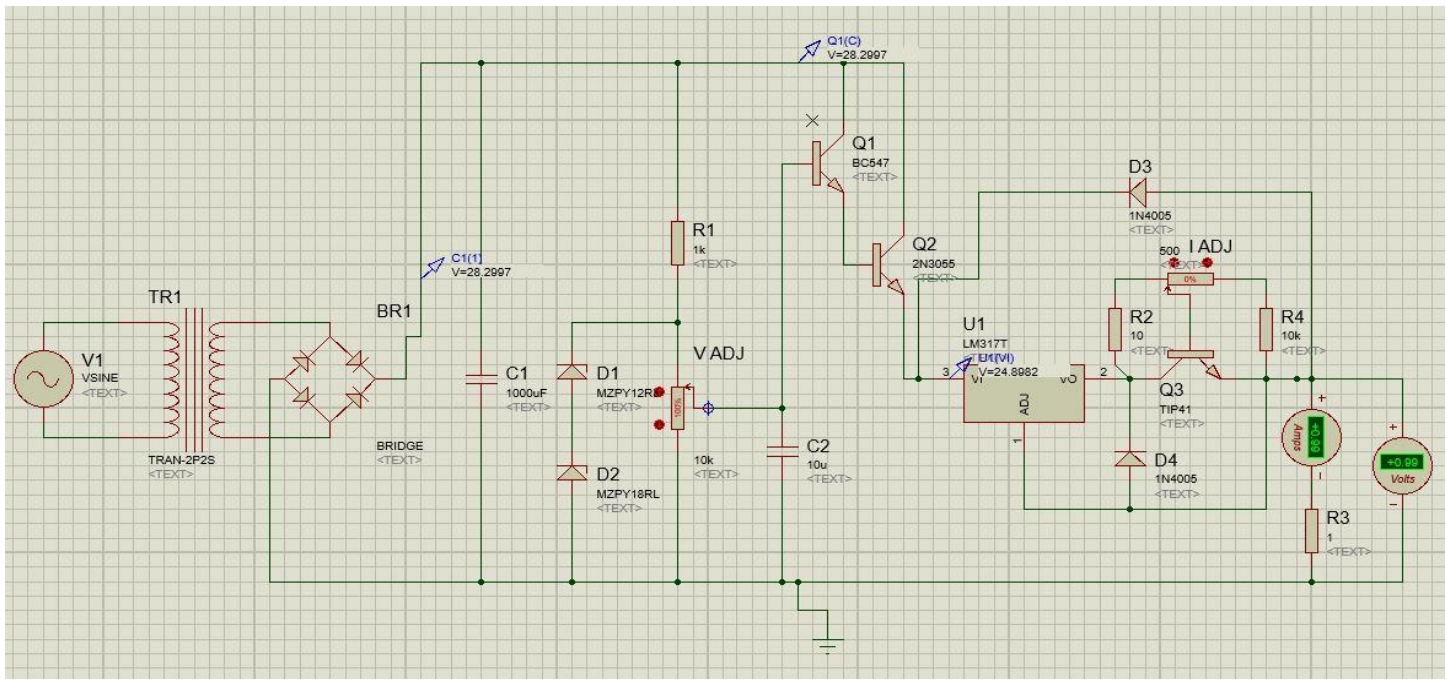


Fig: Maximum current output 1A(can vary current has another current adjustment with voltage adjustment)

Schematics and PCB design using solidworks

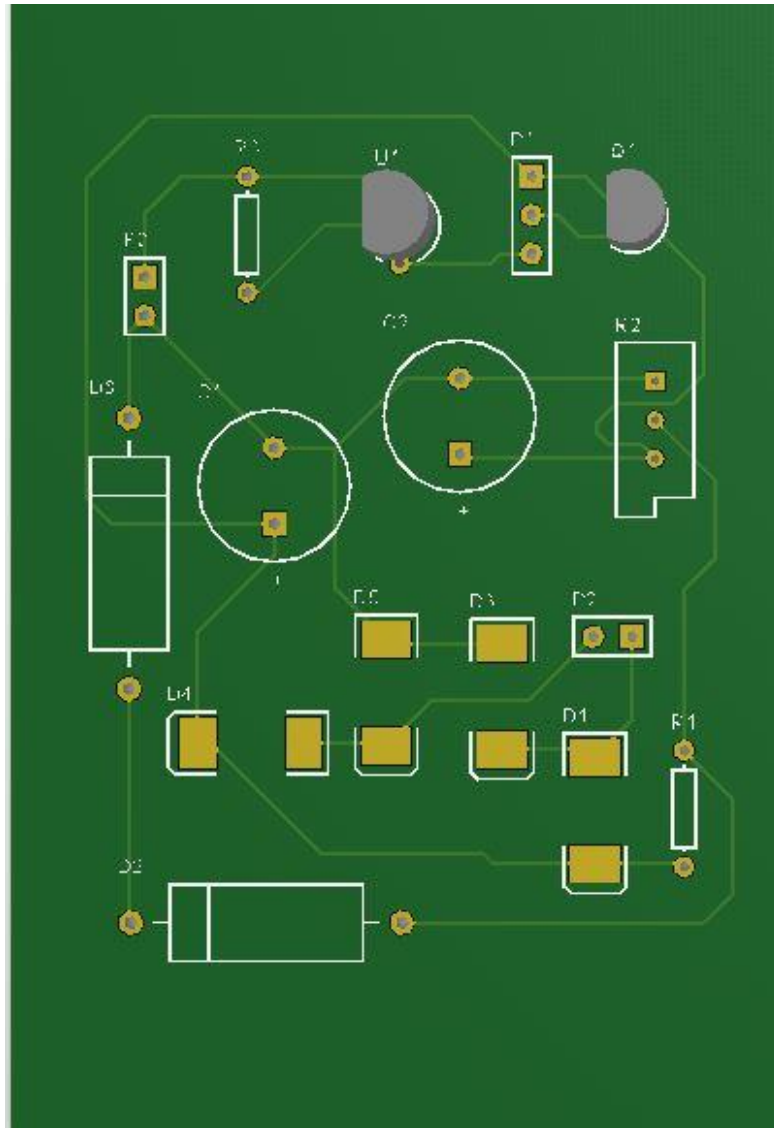
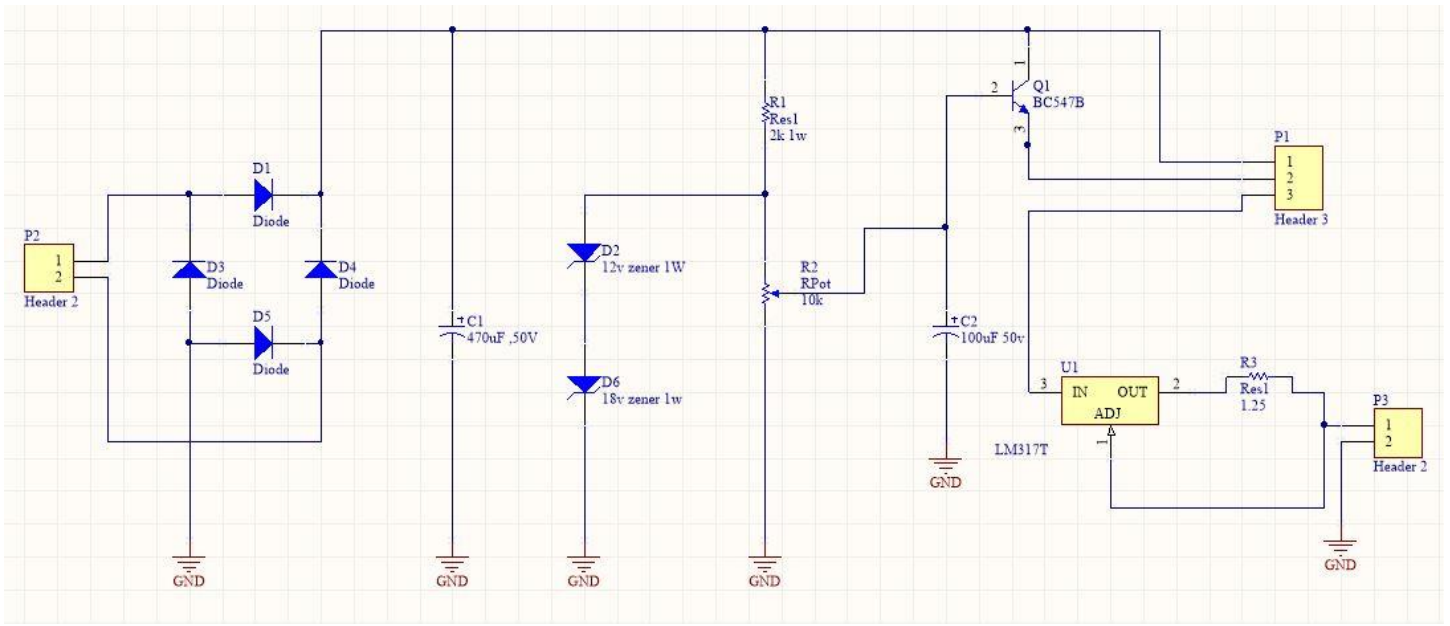


FIG: 2*3 pcb (Here I design pcb and schematics only for the voltage adjustment circuit)

CAD



